



TO LET

Ashbourne Avenue, Harrow, HA2

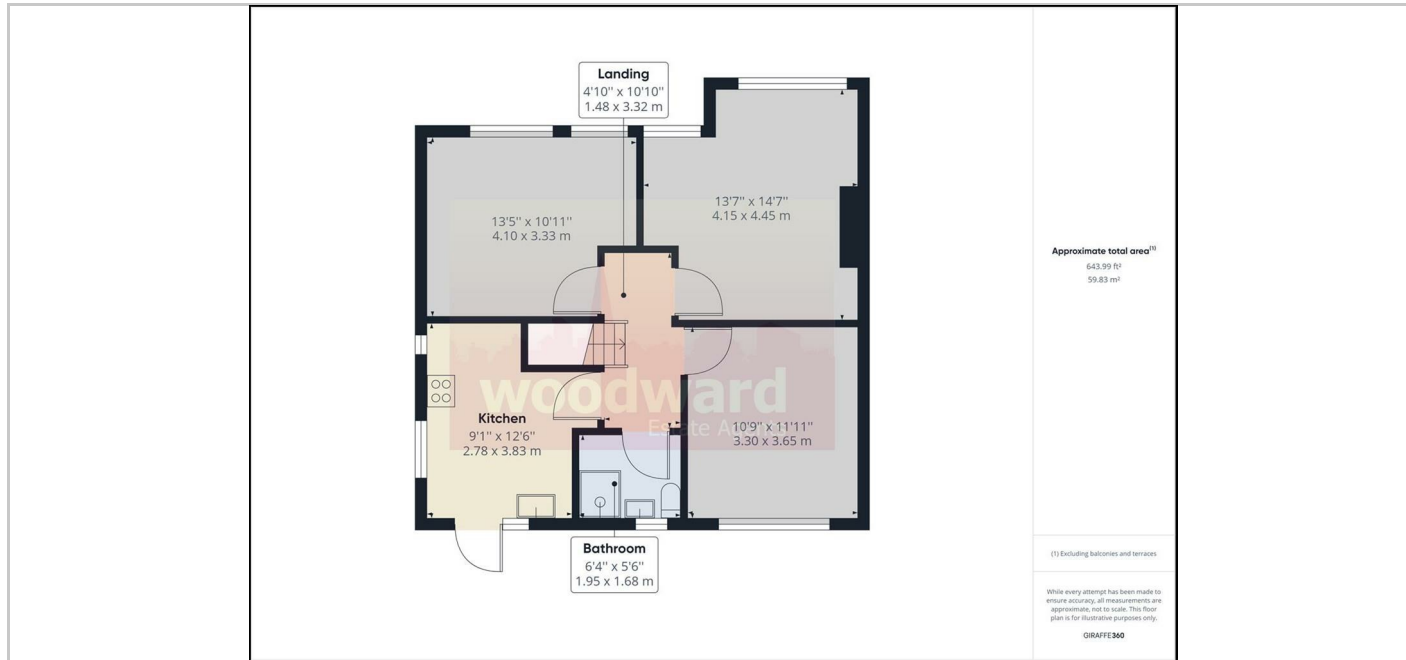
£1,950 Per month



- 2 Double Bedrooms First Floor Maisonette
- Direct Access to Own Patio Garden
- Unfurnished
- 1 mile to Harrow Town Centre
- Modern Kitchen/Breakfast Room & Shower Room
- Summer House
- Convenient to Piccadilly Line Station & Waitrose

THE PROPERTY

Available from 27th June, this well-presented two double bedroom first floor maisonette was refurbished to a high specification in recent years. The property benefits from direct access to its own private patio garden, complete with a summer house with power, and enjoys views overlooking open fields. Internally, it offers a spacious lounge, a separate fitted kitchen/breakfast room, a modern shower room, and loft access providing additional storage. Ideally situated in a quiet cul-de-sac, the property is close to Waitrose and the Piccadilly Line station, and approximately one mile from Harrow Town Centre, as well as Harrow-on-the-Hill Metropolitan Line/BR station. Available unfurnished. Council Tax Band: C EPC Rating: C69



SITUATION

Directions